

NOV 2002

LEGO

magazine

Harry Potter

The Magic Returns!

Build Exciting Scenes
from the Movie!

Star Wars Episode II:
Attack of the Clones™
Comic

LEGO Star Wars
Secret
Mission!

PLUS:
Building Tips
Cool Creations
and more!

LEGO, the LEGO logo, Harry Potter, Star Wars, and Attack of the Clones are trademarks of their respective owners. © 2002 LEGO Group. All rights reserved.

STAR WARS™



Obi-Wan Kenobi™



Anakin Skywalker™



Zam Wesell™

Obi-Wan Kenobi™ grabbed this probe droid to save Senator Amidala™, but he didn't expect it to take off across Coruscant™!

WHERE IS THIS DROID HEADED? AND HOW AM I GOING TO HANG ON?

THE PROBE DROID IS ON ITS WAY BACK TO ITS OWNER... BOUNTY HUNTER ZAM WESELL™!



ONCE I HAVE MY DROID BACK, I'LL START MAKING PLANS FOR MY NEXT ATTEMPT.



WAIT! WHO'S THAT HANGING ONTO MY DROID? I'LL FIX HIM!



OH NO! IT'S A LONG WAY DOWN!

ZAPP!



ANAKIN SKYWALKER™ TO THE RESCUE!

DOOF!

ARE YOU OKAY? THEN LET'S GET THAT BOUNTY HUNTER!

THE CHASE IS ON!

SHE WON'T GET AWAY NOW!

UH-OH! I BETTER TRY TO LOSE THESE JEDI!





ANAKINSM REPAIRS THE DAMAGE TO THE SPEEDER AND THE CHASE IS ON AGAIN!



WHAT WILL HAPPEN NEXT? THE ANSWER IS IN STAR WARSSM EPISODE II: ATTACK OF THE CLONESSM!

you can build this

**STAR
WARS**

R4-Hunter

The R4-Hunter is specially designed to track vessels across vast areas of space, without being detected. It is built for speed and stealth, with special devices capable of blinding out enemy sensors. It's a favourite ship for bounty hunters throughout the galaxy.



You'll find all the pieces you need to build the R4-Hunter in #7163 Slave™

Step 1



Step 2



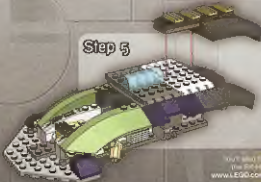
Step 3



Step 4



Step 5



You'll also find steps to build the Slave™ in #7163 Slave™
www.LEGO.com/starwars/building

Step 6



Step 7



Final Step



Rescue Brick Race!

Jack Stone is headed around the world to help people in trouble – and he's invited you and your friends to come along! Race around the globe and see who can collect the most rescue bricks on the way!

To play, you will need:

One LEGO® brick for each player, each in a different colour. A pile of LEGO bricks that can be used as "rescue bricks." A six-sided die like the ones found in most board games.

Rules

Everyone begins at the "Start" square. Roll the die to see who goes first. Move around the board, following the instructions on the squares as you go. The player who finishes the game with the most rescue bricks wins!



LAND, SEA, OR
AIR - IT'S CAN DO,
WILL DO, DONE!



Flying in the fog!
Lose one turn.

You help put
out a forest fire!
Collect one
rescue brick.

Rescue
mountain
climbers!
Collect one
rescue brick.

You forgot
your rescue gear!
Go back two
spaces.

Start!

Made a wrong turn on the way to volcano eruption!
Lose one rescue brick.

You need to refuel!
Go back one space.

JACK STONE TO HQ! ON MY WAY TO ANOTHER RESCUE!

Track poachers back to their camp to save wild animals!
Collect one rescue brick.

Testing new super jet fuel!
Advance one space.

Can't find missing explorer!
Lose one rescue brick.

Set a new air speed record!
Roll again.

Save boaters from stormy seas!
Collect one rescue brick.

Dodging weather balloons!
Lose one turn.

Too snowy to take off!
Lose one turn.

THAT'S A 10-4, THE RESCUE MISSION IS A SUCCESS.

Save archaeologists lost in desert!
Collect one rescue brick.

4617 Dual Prop Turbo

Spot stranded campers from the air!
Collect one rescue brick.

Catch a tailwind!
Advance two spaces.

Bring food and supplies to Arctic expedition!
Collect one rescue brick.

Navigation chart missing!
Go back one space.

Finish

Who has the most rescue bricks?
YOU WIN!

CONGRATULATIONS RESCUE TEAM! WE'RE CLEAR FOR LANDING!



spotlight on

Harry Potter

A CHAMBER OF SECRETS

The Magic Returns

Harry Potter™

After a summer with the Dursleys, young wizard Harry Potter can't wait to get back to Hogwarts! But he might not be in such a hurry if he knew what was lurking inside the Chamber of Secrets...

Gilderoy Lockhart™

Gilderoy is the new Defense Against the Dark Arts teacher at Hogwarts. A famous wizard and best-selling author, Gilderoy claims to have met and defeated hundreds of magical creatures.

Professor McGonagall™

Minerva McGonagall is the Deputy Headmistress at Hogwarts and teaches Transfiguration. She's known for her ability to turn into a tabby cat, and for giving huge amounts of homework.

Dobby™

Dobby is a house-elf who appears in Harry's bedroom at Privet Drive with a dire warning: That Harry Potter should not return to Hogwarts!

Ginny Weasley™

Ginny, Ron Weasley's little sister, is a new student at Hogwarts and has a crush on Harry Potter.

Draco Malfoy™

Draco is the Quidditch Seeker for Slytherin House and an enemy of Harry Potter. Draco is always bullying Ron and Hermione with the help of his two friends, Crabbe and Goyle.



To see behind the scenes magic on the making of the LEGO boys go to:

club code

www.LEGO.com/club
CLUB CODE: POTTER

4727 Aragog in the Dark Forest™

Harry Potter and Ron Weasley travel to the Dark Forest and discover Aragog is not just the size of a small elephant. When he tells the boys, an inspection in his web forever. It will take all of Harry's skill and courage to escape!

Pull the lever to trap Harry and Ron in Aragog's web!

4729 Dumbledore's Office™

There are plenty of surprises waiting inside Professor Dumbledore's office!

Beyond the hidden entrance and past the moving stair, you'll find Harry Potter, Professor McGonagall and Dumbledore himself!

ALPHA TEAM

MISSION DELIVER

WATER, WATER... Nowhere?

1 2 210.

"I'VE GOT THE PLAN. YOU GUYS WILL KEEP THE FUEL, ENZY MANUSUVE - B UNAWARE THAT 'MARGE' WAS ON TOP OF THE NAVIGATOR"



HA HA WHIRLPOOL MACHINE HAS ALREADY DRUG UP TWO SWIMMING HOLES IN CANADA A HUG PUZZLE IN AUNGK AND A STOPPED-UP SINK IN LONDON SOON ALL THE WORLD'S WATER WILL BE MINE



HOW TO SEND OGEEL'S PLANS DOWN THE TUBES!



DRAT! BUT I'LL MAKE DASH FEEL LIKE A FISH OUT OF WATER!



THIS WILL BE DASH'S FINISH!

LIKE DASH ALWAYS SAYS... WHEN IN DOUBT, SCRAMBLE EVERYTHING AND HOPE YOU'RE SOMEPLACE ELSE WHEN IT ALL GOES BLOODY.

TO GOEL'S SURPRISE, HIS UNDERSEA BASE ROCKETS STRAIGHT UP!



WHAT?? THIS WASN'T SUPPOSED TO HAPPEN! HELP!

MISSION DEEP SEA WILL BE WAITING WHEN YOU LAND!

YEAH!

WHOOSH!

ANOTHER VICTORY FOR ALPHA TEAM MISSION DEEP SEA!

you can build this

Ogel's Undersea Serpent

Even killer whales run from Ogel's Undersea Serpent! Its sleek tail helps it manoeuvre underwater, and powerful claws grab on to LEGO® Alpha Team™ subs and don't let go!



Step 1



Step 2



Step 3



Step 4



Step 5



Final Step

You'll find all the pieces you need to build Ogel's Undersea Serpent in 44793 Ogel (Black Abyss) Sub and 44787 Ogel (Magma Killer) Whale. Or create your own Mission Deep Sea model using pieces from your collection.





you can **build this**

BIONICLE

TOA NUVA Kalca

Despite their great power, even the TOA NUVA sometimes face menaces too formidable for any one hero to challenge. To overcome these threats, they merge their bodies and minds to form the Toa Nuva Kalca. No force on Mata Nui can withstand their might!

www.bionicle.com



Combine the Forces of...

- 8967 LEWA NUVA includes steps 1-7
- 8971 KORUA NUVA includes steps 8-13
- 8970 GALI NUVA includes steps 14-17



Merge the Forces of...

- 8972 LEWA NUVA includes steps 1-7
- 8969 KORUA NUVA includes steps 8-13
- 8970 GALI NUVA includes steps 14-17

Decode the secret BIONICLE™ message!



you can build this



STUDIOS

SPIDER-MAN

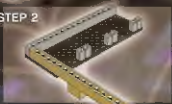
STEP 1



Harbour Pursuit

Crooks thought they could escape the law by fleeing to the docks – but they didn't count on Spider-Man! The webslinger tracked them down and held them for the police harbour patrol. The city is safe once again, thanks to your friendly neighbourhood Spider-Man!

STEP 2



STEP 3



STEP 4



STEP 5



STEP 6



FINAL STEP



You can build this exciting action scene using pieces from #1376 Spider-Man Action Studio!

LEGO and the LEGO logo are trademarks of the LEGO Group. © 2002 LEGO System A/S. All rights reserved.

LEGO and the LEGO logo are trademarks of the LEGO Group. © 2002 LEGO System A/S. All rights reserved.